



Front of case



Rear of case



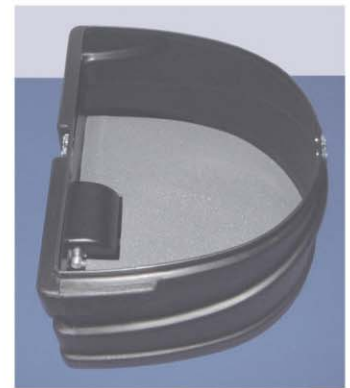
Internal view of case



Two cases can be placed together to form a counter top



Optional case conversion wrap secured using hook fastener



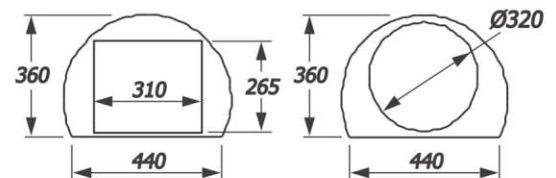
Internal view of lid

Main Features

- Manufactured from tough moulded polyethylene
- Case can be locked (keys supplied)
- Two cases can be placed together to form a counter top
- Each case can accept one 3 x 4 curved or straight popup frame with magnetic bars
- To prevent damage, graphics should be transported in a separate case to the popup frame
- Case to counter conversion wrap is an optional extra
Wrap dimensions : 875mm (H) x 2170mm (W)
(2170mm width includes a 25/30mm overlap for hook / loop fastener)

Technical Specification

- Overall external dimensions : 995mm (H) x 475mm (W) x 420mm (D)
- Weight of case (when empty) : 8kg approx
- Internal dimensions (mm) :



Internal height : 960mm