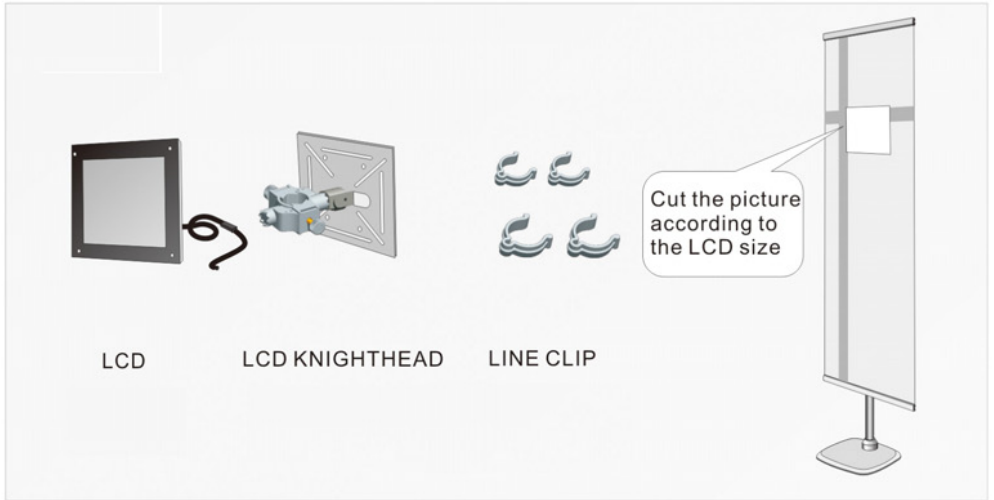
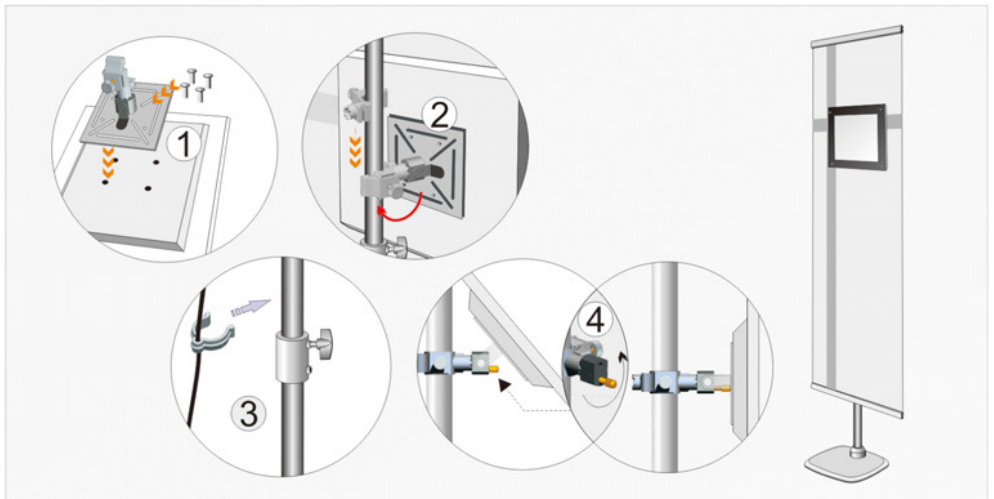


1. LCD banner sets . . .



①. LCD Parts; LCD knighthead、LCD、2 kinds size line clip and the graphic which with the LCD window (60x180cm).



②. As the picture show, install the LCD knighthead on the back of the LCD (step 1) clip it on the pole (step 2) clamp the line use the lineclip (step 3) last adjust the balance screw, let the LCD paralleled with the graphic