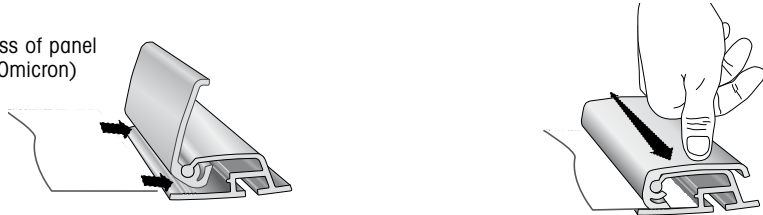


**A**

**Mount the panel into the Snap Profile**



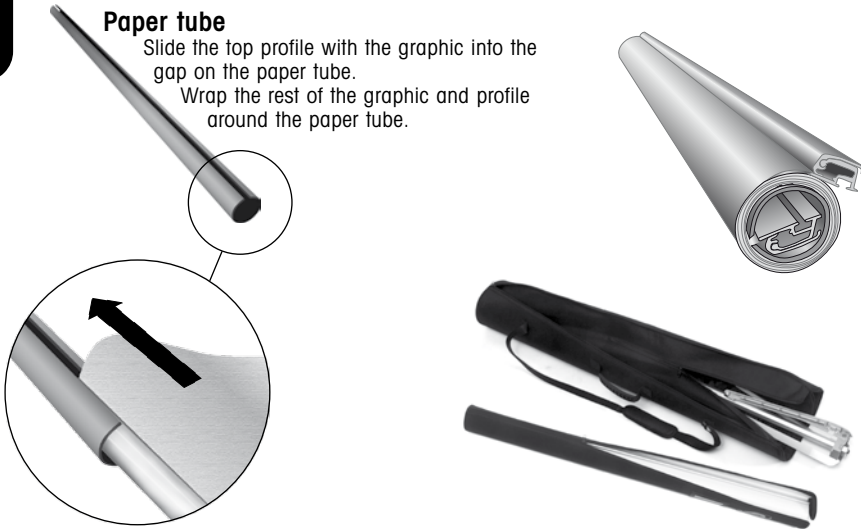
Max thickness of panel  
0,5mm (500micron)



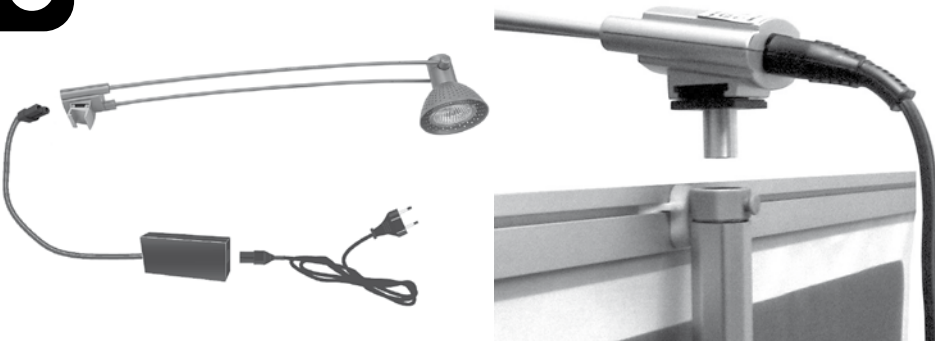
**B**

**Paper tube**

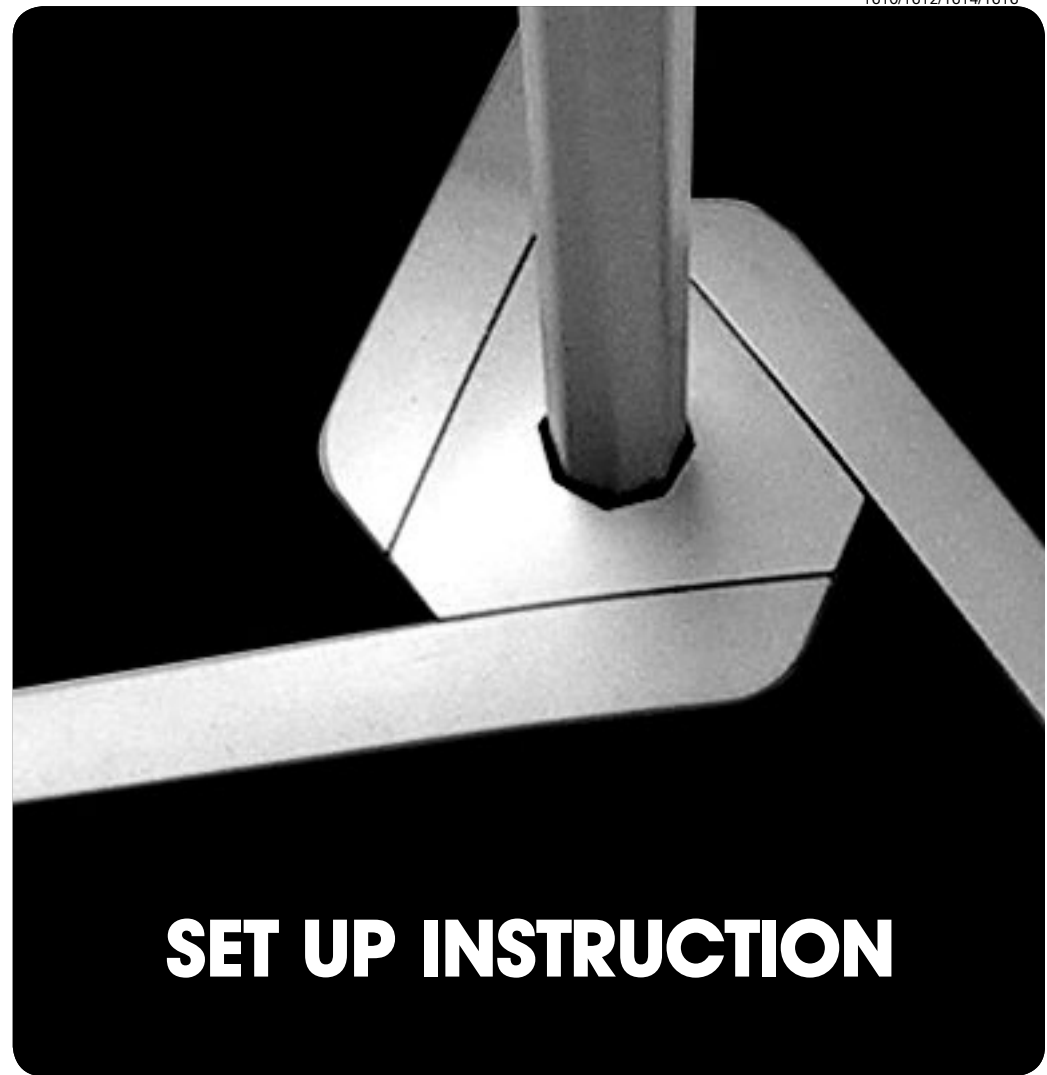
Slide the top profile with the graphic into the gap on the paper tube.  
Wrap the rest of the graphic and profile around the paper tube.



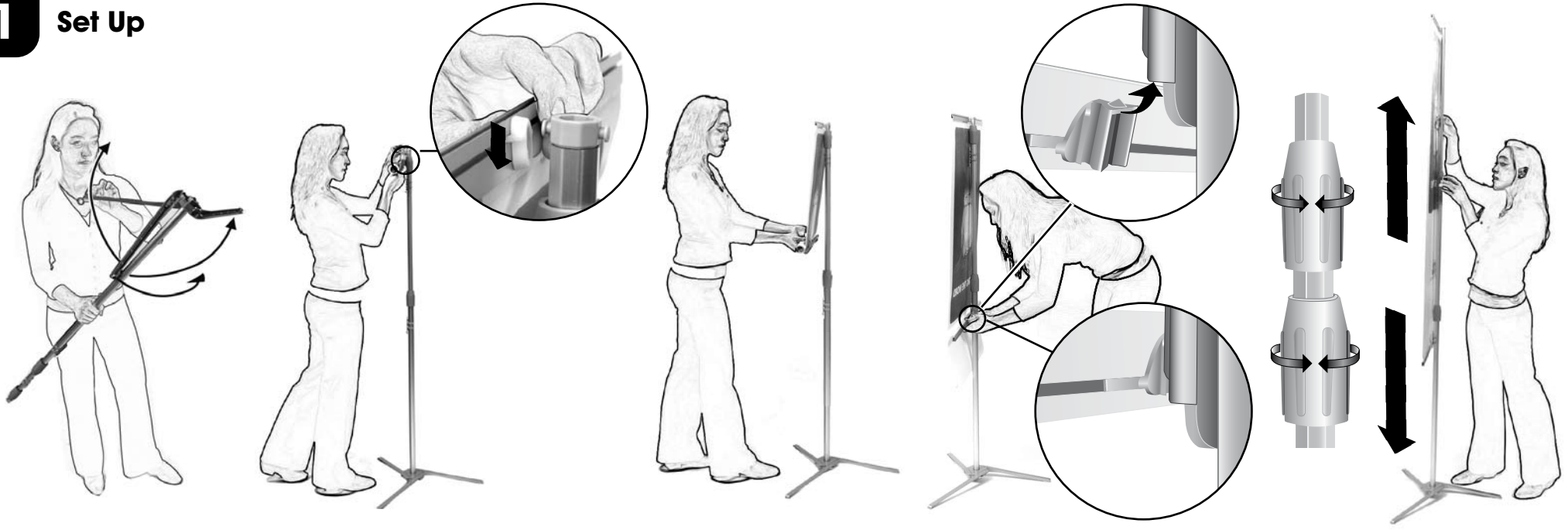
**C**



Graphic No: 10543



# 1 Set Up



# 2 Take down

